

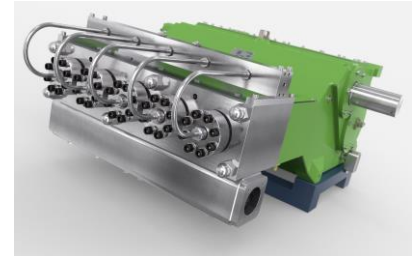
五柱塞泵 K 50000 - 5G

P 54-1

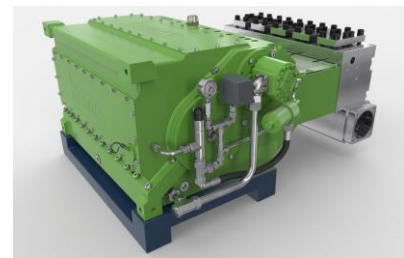
Quintuplex Plunger Pump

15.10.2016

- 流量基于100%的容积率和20°C的环境温度
- 最小入口压力取决于流体介质
- 速度范围10-100%取决于连杆力
- 动态平衡齿轮
- 齿轮强制润滑和油冷却
- 减速比 $i = 3,30 - 3,95 - 4,66 - 5,63$
- 适用 API 674 标准
- 根据要求, 可以使用特殊介质, 例如海水, 乙二醇, 甲醇, 油等。



- Flow rate is based on 100% volumetric efficiency and 20°C ambient temperature
- min. inlet pressure depending on fluid medium
- Speed range 10-100% depending on rod force
- Gear dynamically balanced
- Gear with force-fed lubrication and oil cooling
- Gear ratios $i = 3,30 - 3,95 - 4,66 - 5,63$
- Also available to API 674
- Special medium such as sea water, glycol, methanol, oils, etc. on request



n _{nom} = 450 1/min		p max. bar @ kW				Kopftyp / Head type		
Typ / Type	l/min	315 kW	355 kW	400 kW	530 kW	A	M	MC
K 50018 - 5G	69	2430	2740	3085	3500	1		
K 50020 - 5G	85	1965	2220	2500	3245	1		
K 50022 - 5G	103	1625	1830	2065	2685	1		
K 50024 - 5G	122	1365	1540	1735	2255	1		
K 50026 - 5G	143	1165	1310	1480	1920	1		
K 50028 - 5G	166	1005	1130	1275	1655	1		
K 50030 - 5G	191	875	985	1110	1445	2		
K 50032 - 5G	217	765	865	975	1270	2		
K 50036 - 5G	275	605	685	770	1000	2		H
K 50040 - 5G	339	490	555	625	810	2		H
K 50045 - 5G	429	385	435	490	640	2		H
K 50050 - 5G	530	315	355	400	520	2	1	H
K 50055 - 5G	641	260	290	330	430		1	1
K 50060 - 5G	763	215	245	275	360		1	1
K 50065 - 5G	895	185	210	235	305		1	1
K 50070 - 5G	1039	160	180	200	265			1
K 50075 - 5G	1192	140	155	175	230			2
K 50080 - 5G	1356	120	135	155	200			2
K 50085 - 5G	1531	105	120	135	180			2
K 50090 - 5G	1717	95	110	120	160			2
K 50095 - 5G	1913	85	100	110	145			2

API 674 = max. 385 1/min

 = Ultra High Pressure UHP

尺寸图 K 50000-5G

Dimension drawing

~ 2200 kg P 54-2

01.05.2017

